



MATELDA

SCOTS PINE POLES





MATELDA

Matelda S.r.l.

Is a commercial company of importing and exporting poles made of Scots pine, from wide range of selected forests.

manufacturing process

Poles for vineyards and orchards

Fences and furniture

Half poles

Border

Quality control

The choice of the timber is carried out from the forest's agents of the National Institute of Wood.

Manufacturing and treatment

The trunk of the pine will be delivered from the forests directly to the producers in order to get through the process of manufacturing: peeling, pointed and selected according to the size.

The next step will be that the selected trunk will enter in the drying chamber, in order to dry the wood with the result of a percentage of humidity below 25%. The further stage will be that the pole will be treated in autoclave and treated in IV Class with specific preservative salts. Computerised autoclaves will inject with maximum high pressure the preservative salts in the pole for six hours, in order to ensure and guarantee the quality of the product. Specifically, Matelda uses 10 to 12 kilograms of preservative salts for each cubic meter of timber. The standard procedures of treatment for the usage of preservative salts are 8 kilograms. By using larger quantities of preservative salts, it ensures the protection of the pole from the attack of mushrooms and preserving it from rotting. (As prescribed from the current Regulation DIN 68 800-3). After the poles have been treated in the autoclave, they will be held covered for about 10 days, in order to allow the preservative salts to be fixed in the timber.

Diversification of the product

Our range of products can be fully customised according to any needs of our clients.

Packing of the product and delivery

All Matelda's products are pelletized in order to ease the handling. The goods will be delivered within 2 to 4 weeks from the date of the order, delivered by trucks for any destination.

raw material

The timber comes from selected forests.

General characteristics of Scots pine

General information:

*A tree to 25–40 m tall and 0.5–1.2 m dbh. Stem straight (contorted only if lead shoot damaged when young, often by pine shoot moth *Evetria turionana*).*

The crown is variable, with a variety of shapes common in wild populations from level branches to near-fastigiate.

Open ovoid-conic when young and usually eventually becoming dense, broadly domed or even flat-topped. Bark on lower stem thick, scaly-plated, grey-brown; on upper stem and branches, thin, flaking, orange-red. Branching uninodal. Shoots green at first, becoming grey-buff by the end of the first summer. Buds ovoid-conic, orange-brown, thinly to occasionally thickly covered in white resin.



1°

Peeling



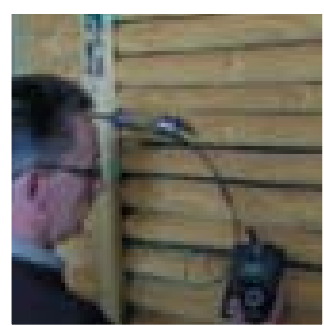
2°

Turning



3°

Drying

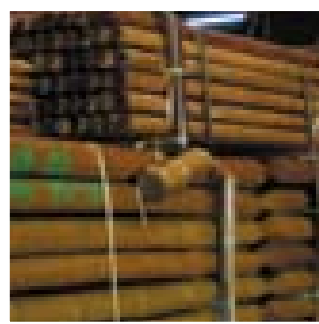
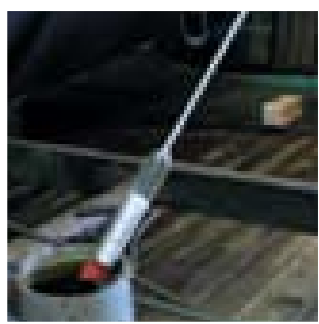
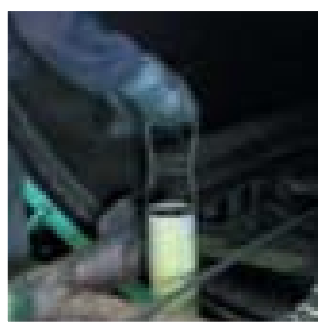
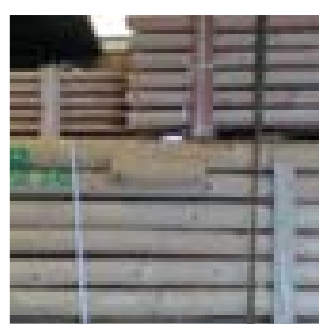


PROCESS

PROCESSES

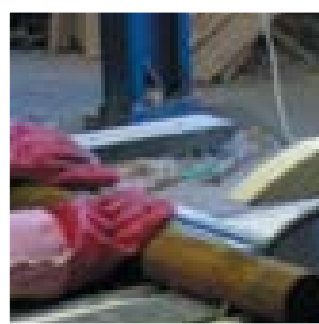
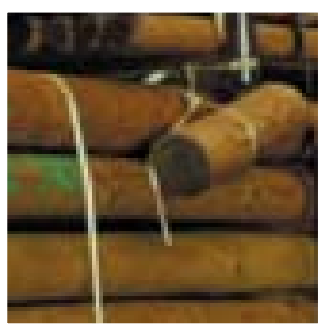
4°

Treatments



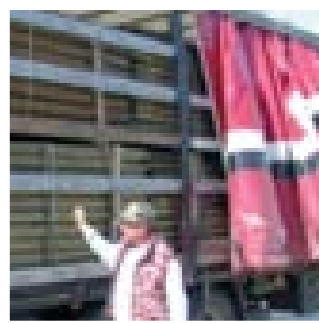
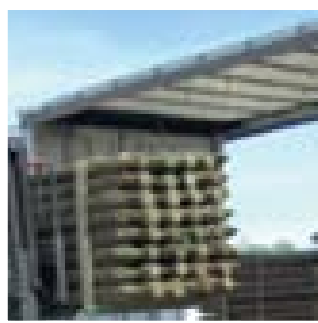
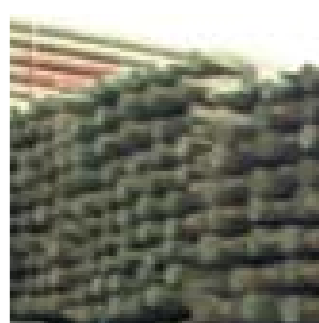
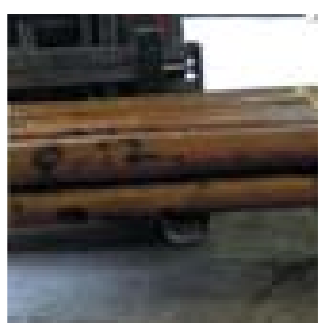
5°

Packing



6°

Final product ready for delivery

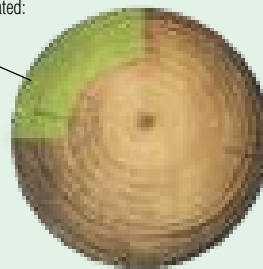


**Peeled poles treated
in autoclave*
PINE WOOD**

DIMENSIONS		UNITS PER PACK
cm	3/5 x 150	500
cm	3/5 x 180	
cm	3/5 x 200	
cm	4/6 x 180	
cm	4/6 x 200	200
cm	4/6 x 220	
cm	4/6 x 250	
cm	4/6 x 275	
cm	4/6 x 300	
cm	6/8 x 180	130
cm	6/8 x 200	
cm	6/8 x 220	
cm	6/8 x 230	
cm	6/8 x 250	
cm	6/8 x 275	
cm	6/8 x 300	
cm	8/10 x 180	100
cm	8/10 x 200	
cm	8/10 x 220	
cm	8/10 x 230	
cm	8/10 x 250	
cm	8/10 x 275	
cm	8/10 x 300	
cm	10/12 x 200	72
cm	10/12 x 220	
cm	10/12 x 250	
cm	10/12 x 275	
cm	10/12 x 300	
cm	10/12 x 350	64
cm	10/12 x 400	
cm	10/12 x 450	
cm	10/12 x 500	
cm	10/12 x 550	
cm	10/12 x 600	
cm	11/13 x 500	56
cm	11/13 x 550	
cm	12/14 x 250	49
cm	12/14 x 275	
cm	12/14 x 300	
cm	12/14 x 400	
cm	12/14 x 450	
cm	12/14 x 500	
cm	12/14 x 550	
cm	12/14 x 600	
ed altre misure		



Wood pine treated:
level of depth
of treatment



Matelda's pine

- Treatment eye visible
- Resistance to traction 800 – 850 kg/cm²
- Resistance of compression 330 kg/cm²
- High tensile strength

The shrinkage cracks



The cracks in the poles, are often interpreted as a sign of breakage or failure, while instead depends of the drying process and consequently the loss of water. Knowledge helps to understand better the shrinkage cracks: these signs, as well as nodes or irregular color, is a manifestation of the vitality of the wood, and is part of the beauty of this material.



VINEYARD

* We do not accept complaints on eventual cracks or stripping of the wood, due to production process and climate variation.

Peeled poles with tip of CHESTNUT WOOD*

DIMENSIONS UNITS PER PACK

cm	4/6 x 300	300
cm	6/8 x 300	280
cm	8/10 x 200	130
cm	8/10 x 250	
cm	8/10 x 270	
cm	8/10 x 300	
cm	8/10 x 350	
cm	8/10 x 400	
cm	10/12 x 250	90
cm	10/12 x 270	
cm	10/12 x 300	
cm	10/12 x 350	
cm	10/12 x 400	
cm	12/14 x 300	70
cm	12/14 x 400	
cm	14/16 x 200	

Half poles

DIMENSIONS UNITS PER PACK

cm	8/10 x 200	200
cm	8/10 x 250	
cm	8/10 x 300	
cm	10/12 x 200	160
cm	10/12 x 250	
cm	10/12 x 300	



Chestnut

[From Wikipedia]

Chestnut is of the same family as oak, and likewise its wood contains many types of tannin.

This renders the wood very durable, gives it excellent natural outdoor resistance, and saves the need for other protection treatment. It also corrodes iron slowly, although copper, brass or stainless metals are not affected.

Chestnut timber is decorative.

Light brown in color, it is sometimes confused with oak wood.

Both woods' textures are also similar.

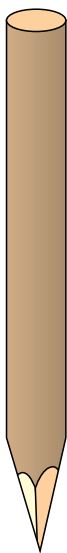
When in a growing stage, with very little sapwood, a chestnut tree contains more timber of a durable quality than an oak of the same dimensions.

Young chestnut wood has proved more durable than oak for woodwork that has to be partly in the ground, such as stakes and fences.

VINEYARD

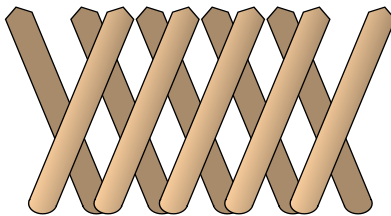
Turned, poles with tip, treated in autoclaves*

DIMENSIONS	UNITS PER PACK
cm 4 x 150	400
cm 4 x 200	
cm 4 x 250	
cm 4 x 300	
cm 5 x 150	330
cm 5 x 200	
cm 5 x 250	
cm 5 x 300	
cm 6 x 150	230



Extensible Fences *

DIMENSIONS	UNITS PER PACK
cm 6 x 120 x 200	18
cm 6 x 100 x 260	
cm 6 x 80 x 200	
cm 6 x 60 x 200	



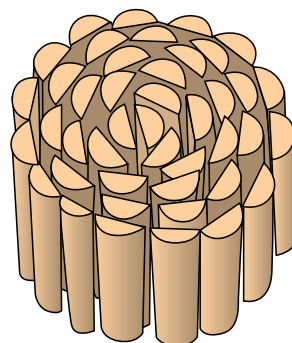
Tuned poles treated in autoclave*

DIMENSIONS	UNITS PER PACK
cm 6 x 200	230
cm 6 x 250	
cm 6 x 300	
cm 8 x 200	156
cm 8 x 250	
cm 8 x 300	
cm 8 x 400	
cm 10 x 200	100
cm 10 x 250	
cm 10 x 300	
cm 10 x 400	
cm 10 x 500	
cm 10 x 600	
cm 12 x 250	72
cm 12 x 300	
cm 12 x 400	
cm 12 x 500	
cm 12 x 600	
cm 14 x 300	49
cm 14 x 400	
cm 14 x 500	
cm 14 x 600	
cm 16 x 300	36
cm 16 x 400	
cm 16 x 500	
cm 16 x 600	
cm 18 x 400	nd
cm 18 x 500	
cm 18 x 600	
cm 20 x 300	nd
cm 20 x 400	
cm 20 x 500	
cm 20 x 600	



Borders*

DIMENSIONS	UNITS PER PACK
cm 6 x 20 x 200	30
cm 6 x 30 x 200	
cm 6 x 40 x 200	20
cm 6 x 50 x 200	
cm 6 x 60 x 200	



The shrinkage cracks

The cracks in the poles, are often interpreted as a sign of breakage or failure, while instead depends of the drying process and consequently the loss of water. Knowledge helps to understand better the shrinkage cracks: these signs, as well as nodes or irregular color, is a manifestation of the vitality of the wood, and is part of the beauty of this material.

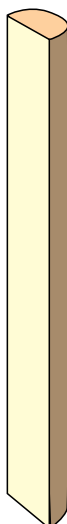


GARDEN

Half poles treated in autoclave*

DIMENSIONS UNITS PER PACK

cm 8 x 200	312
cm 8 x 250	
cm 8 x 300	
cm 8 x 400	
cm 10 x 200	200
cm 10 x 300	
cm 10 x 400	
cm 10 x 500	
cm 12 x 300	144
cm 12 x 400	
cm 12 x 500	
cm 14 x 300	98
cm 14 x 400	
cm 14 x 500	

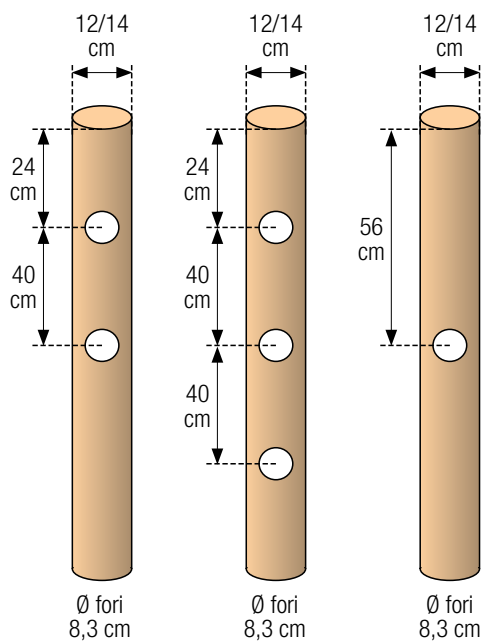


Turned poles treated in autoclave with holes, with or without tip*

DIMENSIONS

1 hole	cm 12 x 150
2 holes	cm 12 x 150
	cm 12 x 175
	cm 12 x 200
	cm 14 x 150
	cm 16 x 150
3 holes	cm 16 x 175
	cm 16 x 200
	cm 12 x 150
	cm 12 x 175
	cm 12 x 200
	cm 14 x 150
	cm 14 x 175
cm 14 x 200	

On request, holes can be made for any needs



Pole with saddle, with or without tip*

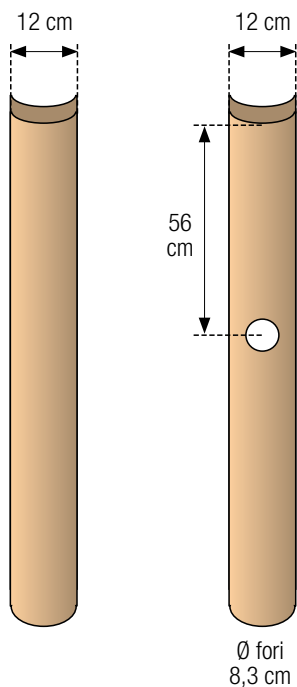
DIMENSIONS UNITS PER PACK

cm 10 x 150	100
cm 12 x 150	72

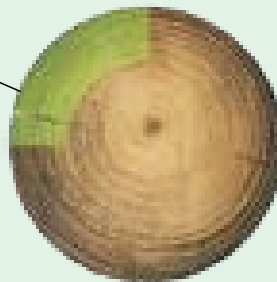
Turned pole with saddle with one hole, with or without tip*

DIMENSIONS UNITS PER PACK

cm 12 x 150	72
-------------	----



Wood pine treated:
level of depth
of treatment



Matelda's pine

- Treatment eye visible
- Resistance to traction 800 – 850 kg/cm²
- Resistance of compression 330 kg/cm²
- High tensile strength

* We do not accept complaints on eventual cracks or stripping of the wood, due to production process and climate variation.

NEW
GARDEN



MATELDA



ANTI HAIL PLANT





MATELDA

MATELDA s.r.l.

Via Coppalati, 6 - 29122 Piacenza (Italy)
Tel. 0523 60 66 66 - Fax 0523 69 81 40/1
matelda@matelda.it
commercio@matelda.it

www.matelda.it - www.matelda.com